

Description of the Male Genitalia of *Anisolinus taoi* NAOMI (Coleoptera, Staphylinidae)

Shun-Ichiro NAOMI

Natural History Museum and Institute, Chiba,
Aoba-cho 955-2, Chiba, 280 Japan

Anisolinus taoi was described by NAOMI (1981) on the basis of two females from Daibosatsu, Yamanashi Prefecture, central Honshu, Japan. After that, I fortunately collected additional specimens (1 male and 2 females) from the type locality on 15-18 July 1982. I will describe here the male genitalia of the species for the first time.

Description. Median lobe stout and moderately sclerotized, bulbous at base, gradually narrowed apically, slightly asymmetrical in apical half, pointed at apex in ventral view, curved ventrally at apical part in lateral view; parameres fused into a relatively broad lobe, the lobe subparallel-sided except for the base, with 4 pairs of straight hairs at apical margin which is moderately emarginate as shown in Fig. 1C, ventral surface of the lobe roundly and shallowly concave, scattered with black and small tubercles at apex.

Remarks. The male genitalia of this species resemble those of *Anisolinus tsurugiensis* K. SAWADA, 1961, but the parameral lobe is broader with its apex emarginate.

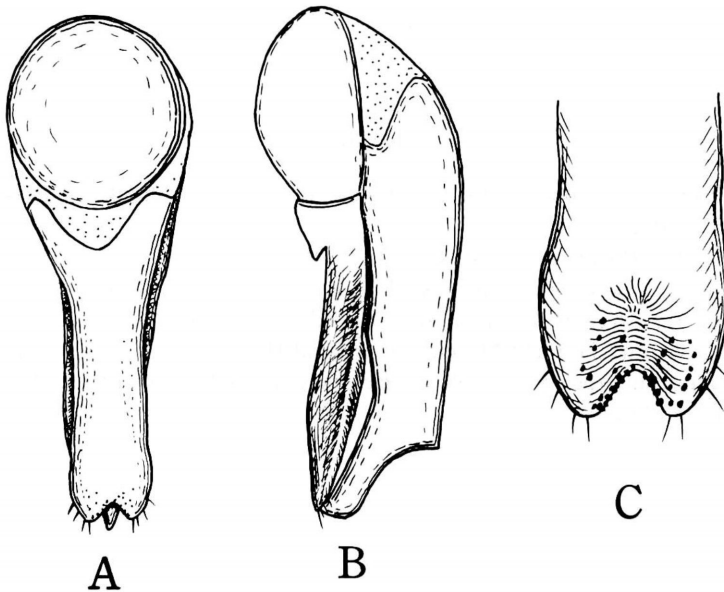


Fig. 1. Male genitalia of *Anisolinus taoi* NAOMI; A, dorsal view; B, lateral view; C, apicoventral part of paramere.

References

- NAOMI, S., 1981. On the genus *Anisolinus* SHARP (Coleoptera, Staphylinidae), with description of a new species. *Kontyû, Tokyo*, 49: 109-115.
- SAWADA, K., 1961. Two new species of the genus *Anisolinus* SHARP from Japan (Col., Staph.). *Ent. Rev. Japan*, 13: 4-6.